

# Cross-sectional survey on patient understanding/opinions regarding sustainability



**Authors:** L Felemban<sup>1,2</sup>, T M F Ajao<sup>1,3</sup>, K M Mayre-Chilton<sup>4</sup> | **Work Addresses:** <sup>1</sup>King's College London, London, SE1 9NH, UK | <sup>2</sup>Department of Nutrition and Dietetics, North Middlesex University Hospital, Sterling Way, London, N18 1QX, UK | <sup>3</sup>Department of Nutrition and Dietetics, Kingston Hospital, Galsworthy Road, London, KT2 7QB, UK | <sup>4</sup>Mildmay Mission Hospital, NHS, London, E2 7DZ, UK

## Introduction

- NHS aims for “Net Zero” greenhouse gas emissions by 2045<sup>5</sup>.
- AHPs have a key role in promoting environmental sustainability.
- To do this, patients' current perception of sustainability must be well-understood.

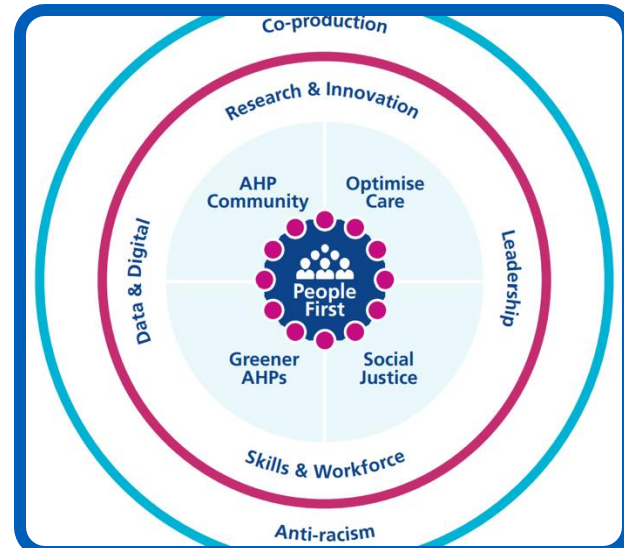


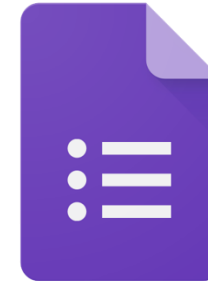
Fig. 1: 2022-27 AHP Strategy for England<sup>6</sup>

**Aim** Assess **a)** patients' awareness of the newly launched low-carbon emission menu, **b)** patients' familiarity and level of engagement with sustainability.

## Method



1) Development and launch of 3-week cycle menu



2) Development of cross-sectional survey



3) Screening of patients against inclusion/exclusion criteria



4) Oral delivery of survey

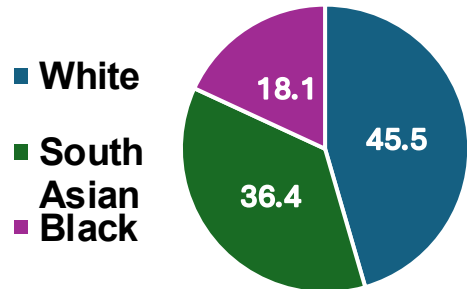
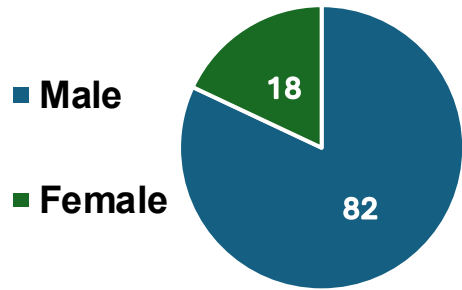
(5) NHS England (2022). Delivering a 'Net Zero' National Health Service. NHS England. Available from: <https://www.england.nhs.uk/greennhs/publication/delivering-a-net-zero-national-health-service/> [Last Accessed: 28/05/2024]

(6) NHS England (2022). The Allied Health Professions (AHPs) strategy for England – AHPs Deliver. NHS England. Available from: <https://www.england.nhs.uk/publication/the-allied-health-professions-ahps-strategy-for-england/> [Last Accessed: 30/07/2024]

# Results

## Demographics

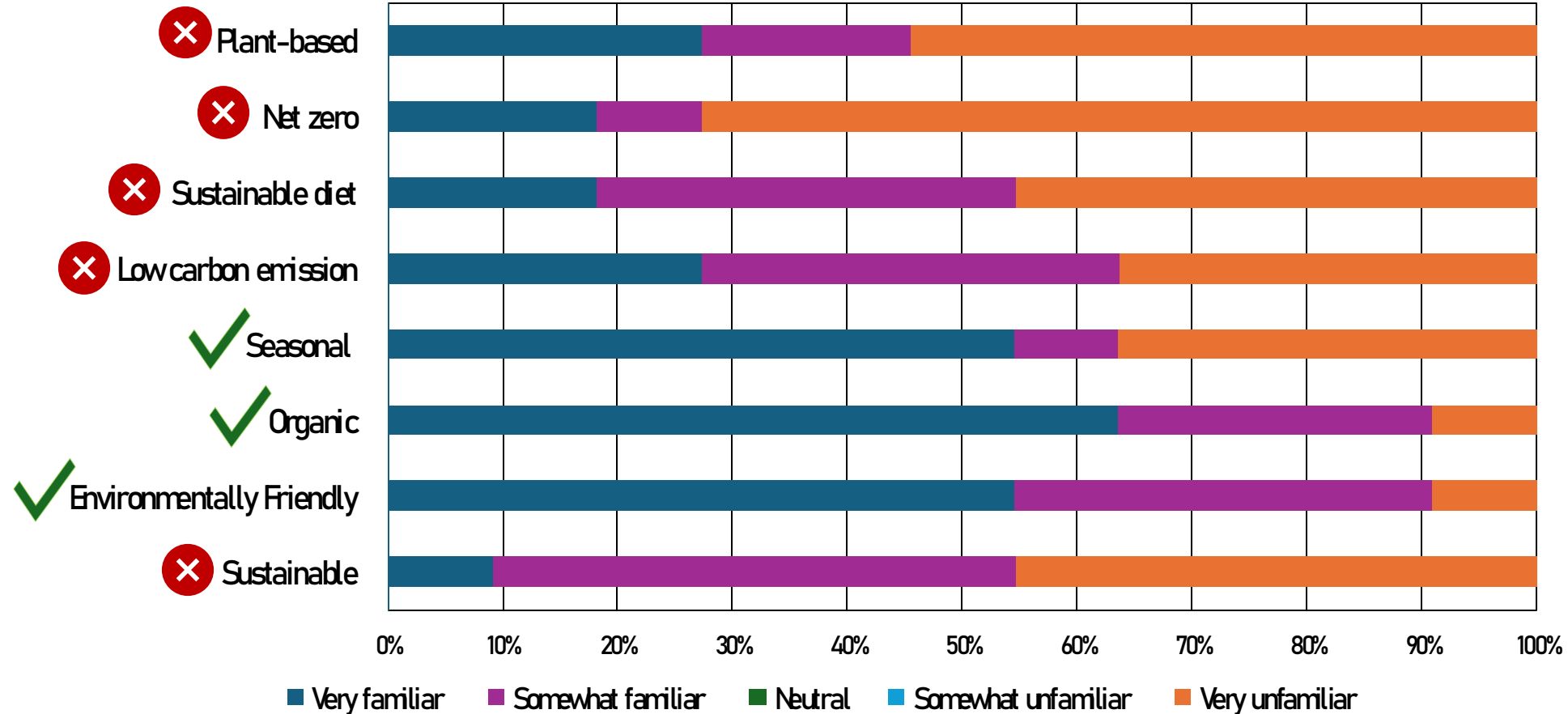
11/16 patients recruited



**Awareness of Menu** – 81.8% not aware that menu was environmentally friendly

**Passionate About the Environment** - 27.3% somewhat to very passionate

## Understanding of Terminology



# Discussion



- Small sample size, male majority
- Patient demographic – adults living with highly complex/poorly managed HIV, homeless, drug/alcohol detoxing
- Limited applicability to larger hospitals
- Social desirability bias



- Ethnically diverse
- Limited order effects bias



## Conclusion

**Survey highlights the need for targeted patient education and promotional materials when launching a new complete low-carbon emission menu.**